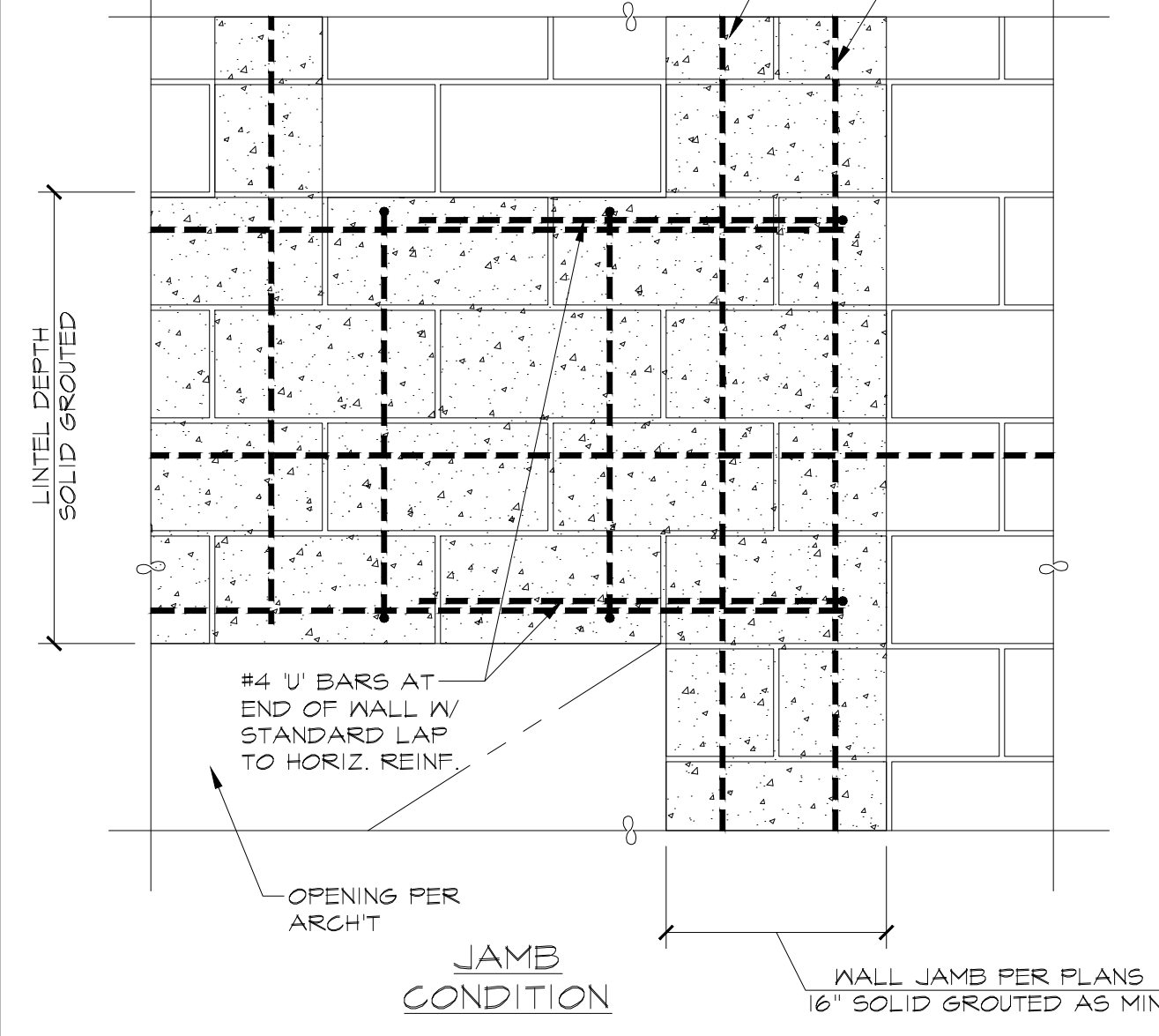
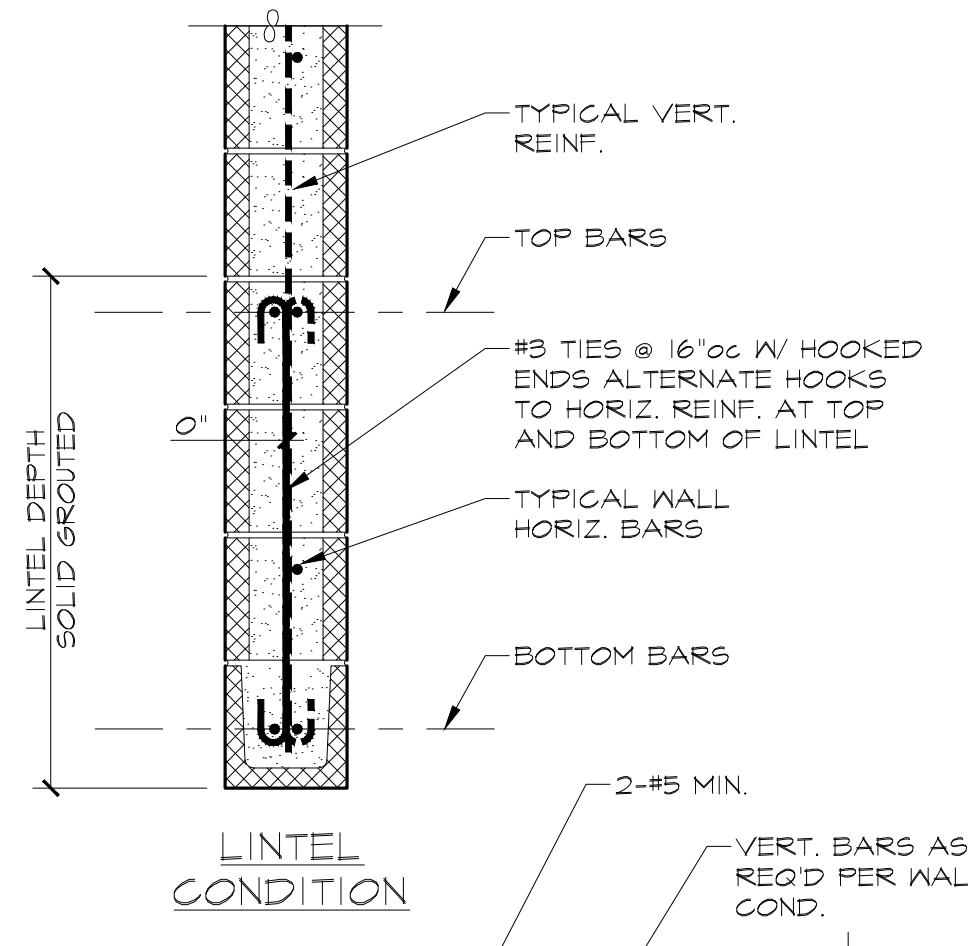


5 DETAIL
SCALE: 1" = 1'-0"

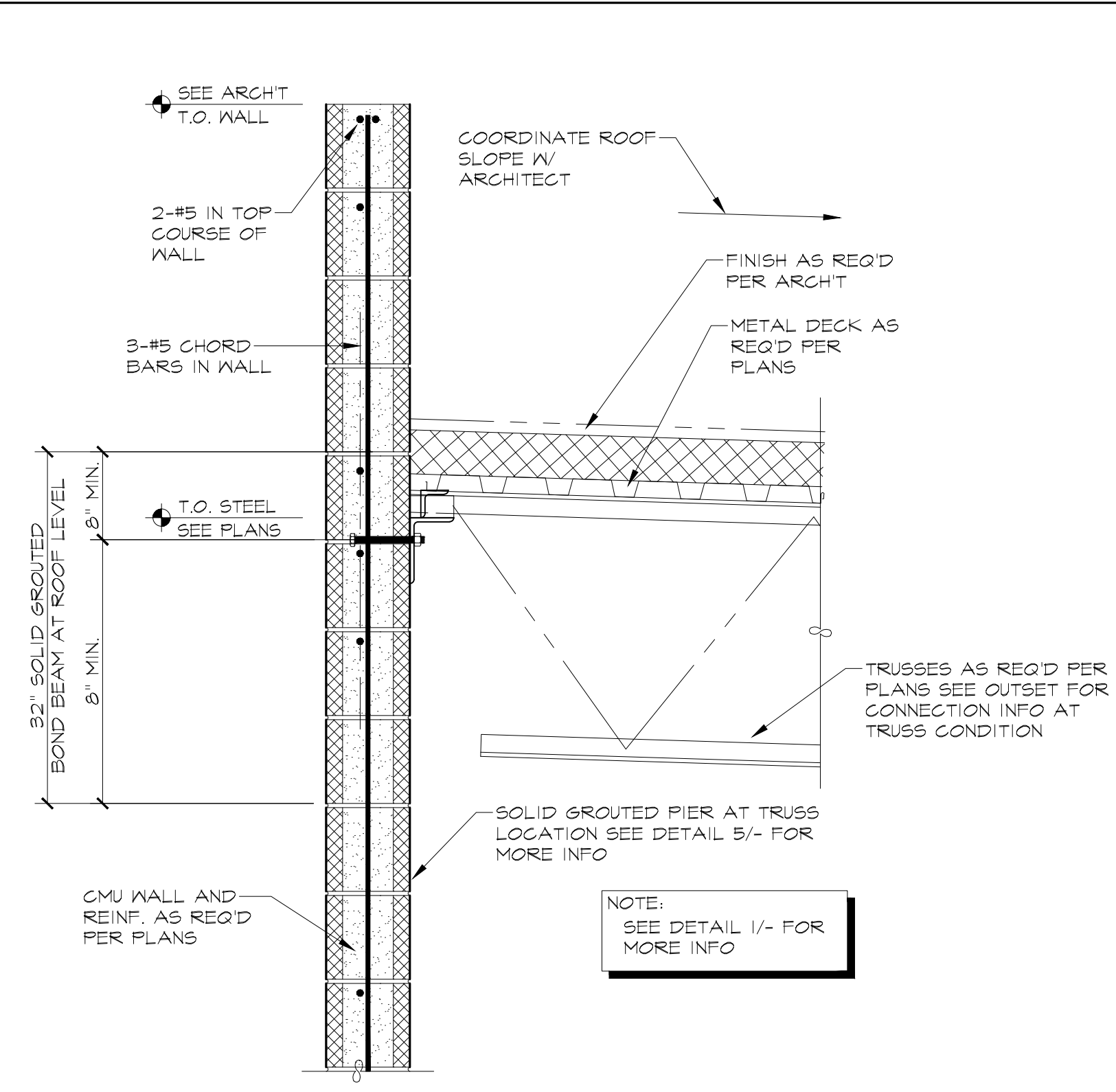


CMU LINTEL SCHEDULE

| TYPE | DEPTH | BOTTOM REINF. | TOP REINF. |
|------|-------|---------------|------------|
| (L1) | 16" | 2 - #5 | 1 - #5 |
| (L2) | 32" | 2 - #5 | 2 - #5 |
| (L3) | 40" | 2 - #6 | 2 - #6 |

- REFER TO MASONRY NOTES ON PLANS FOR MORE INFORMATION OF WALL CONSTRUCTION.
- ALL HORIZONTAL REINFORCEMENT IN LINTEL SHALL BE CONTINUOUS WITH NO SPLICES ALLOWED.
- SEE STANDARD DETAILS FOR WALL REBAR PLACEMENT, SEE S1.5.
- REFER TO S1.5 FOR MASONRY NOTES AND ADDITIONAL REQUIREMENTS.

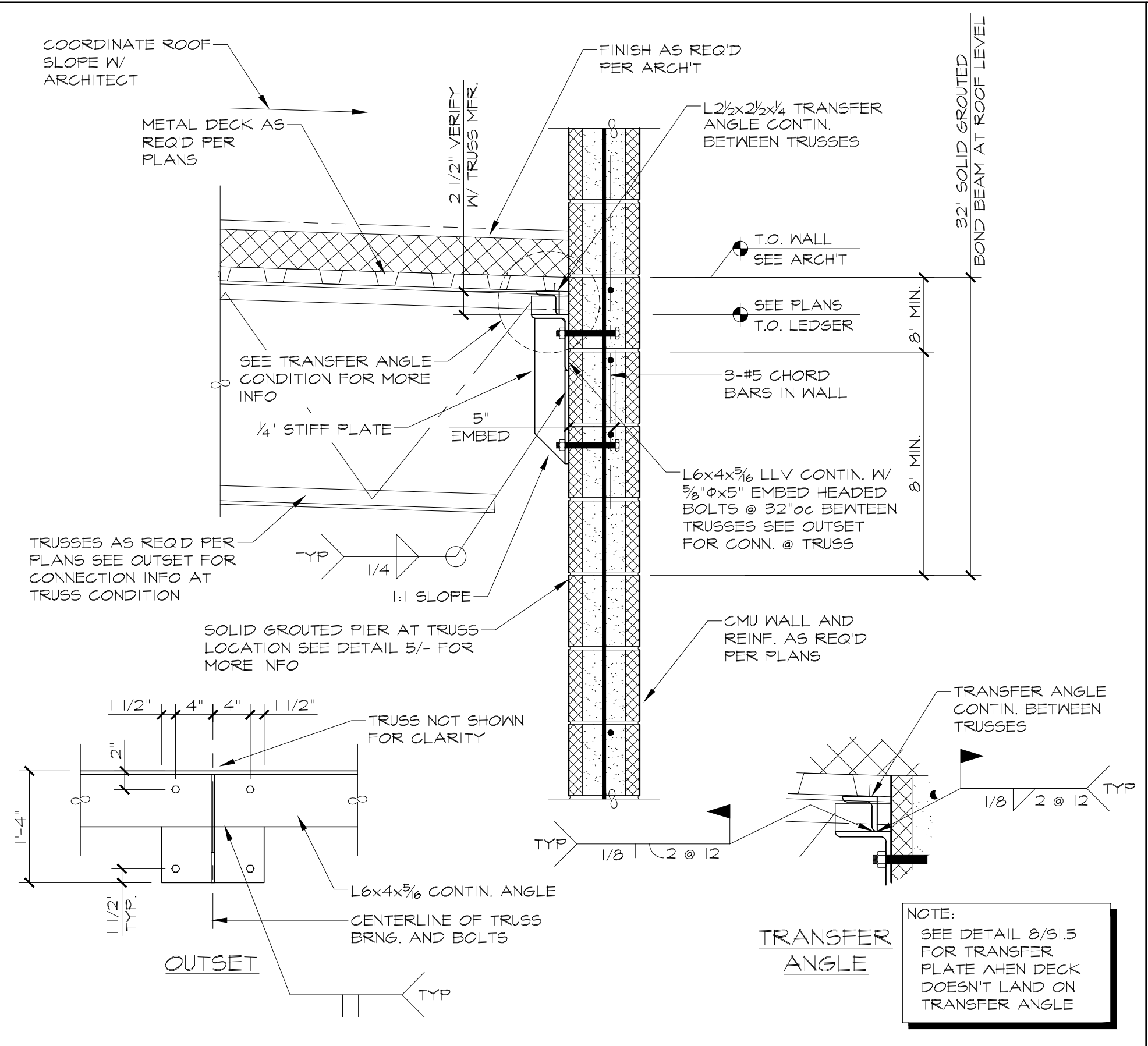
6 DETAIL
SCALE: 1" = 1'-0"



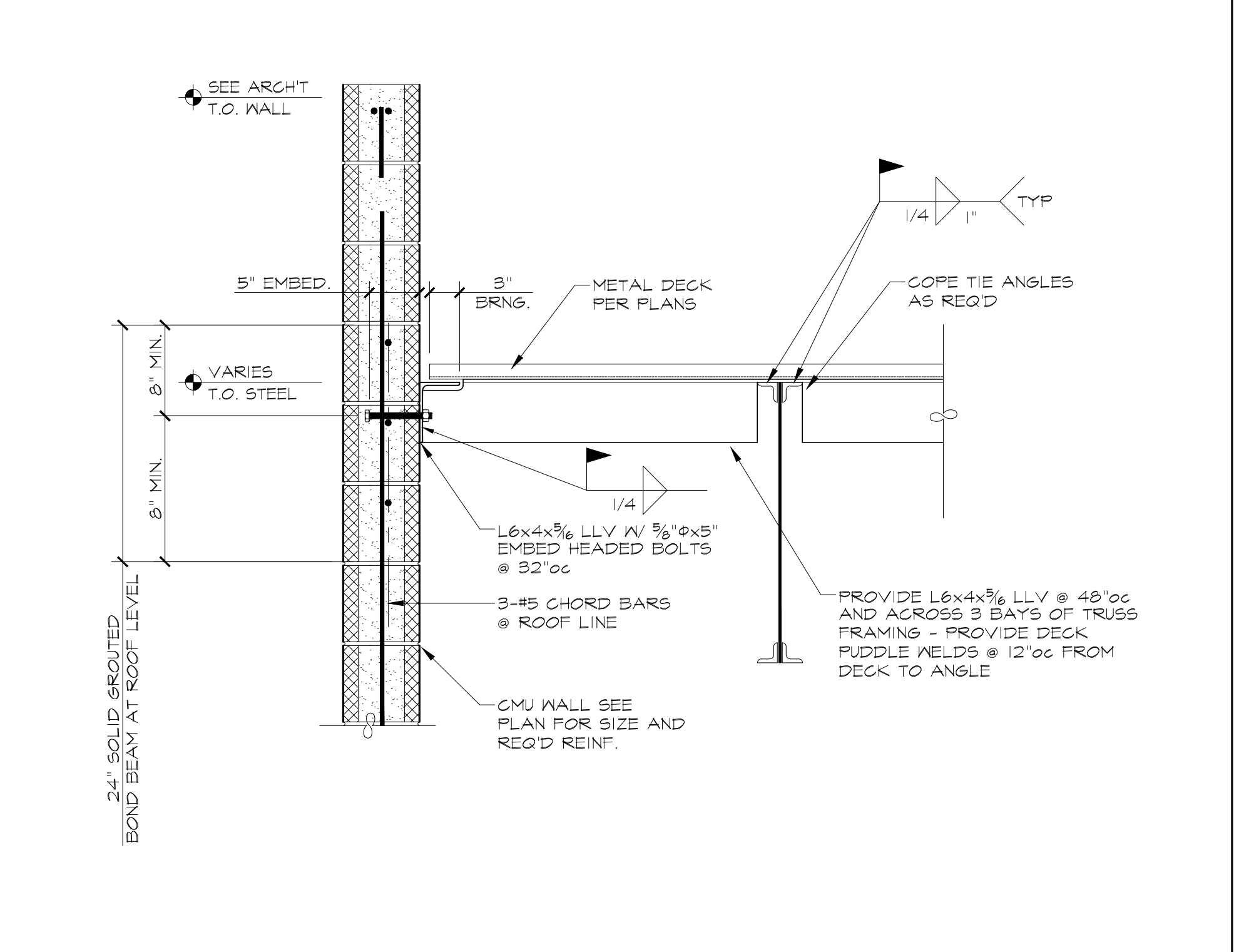
3 DETAIL
SCALE: 1" = 1'-0"

NOT USED

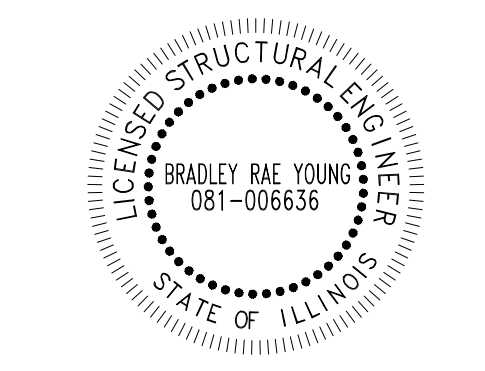
4 DETAIL
SCALE: 1" = 1'-0"



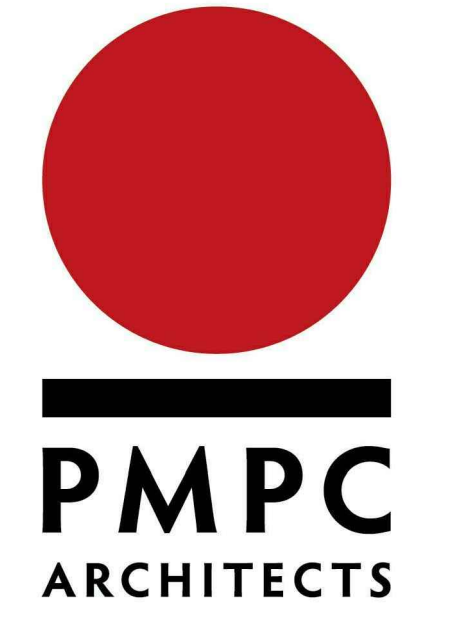
1 DETAIL
SCALE: 1" = 1'-0"



2 DETAIL
SCALE: 1" = 1'-0"



BYA #17185



OFFICE: 312.207.0501
FAX: 312.284.6100
INFO@PMPCARCH.COM
PMPCARCH.COM
527 S. Wells St. Suite 402
Chicago, IL 60607

REVISIONS

| NO. | DATE | DESCRIPTION |
|------------|-------------|------------------------|
| 08-10-2017 | DD | 50% - CLIENT |
| 10-20-2017 | COLLABORATE | - SENT |
| 12-18-2017 | DD | 100% - CLIENT APPROVAL |

DRAWN BY: Author
CHECKED BY: Checker
ISSUED:

1005 W BELVIDERE RD,
GRAYSLAKE, IL 60030

PERMIT #:

DETAILS

S6.1